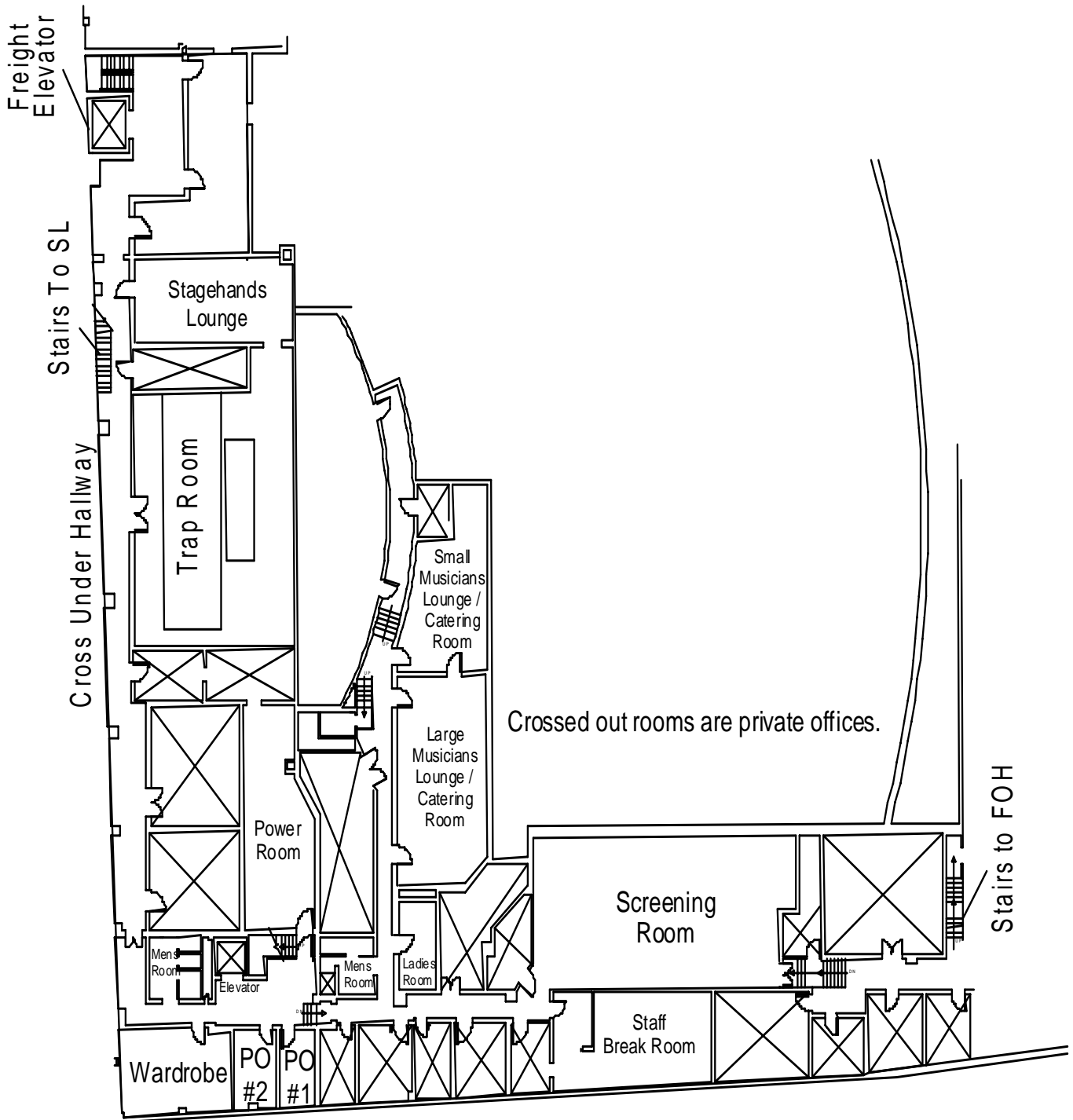
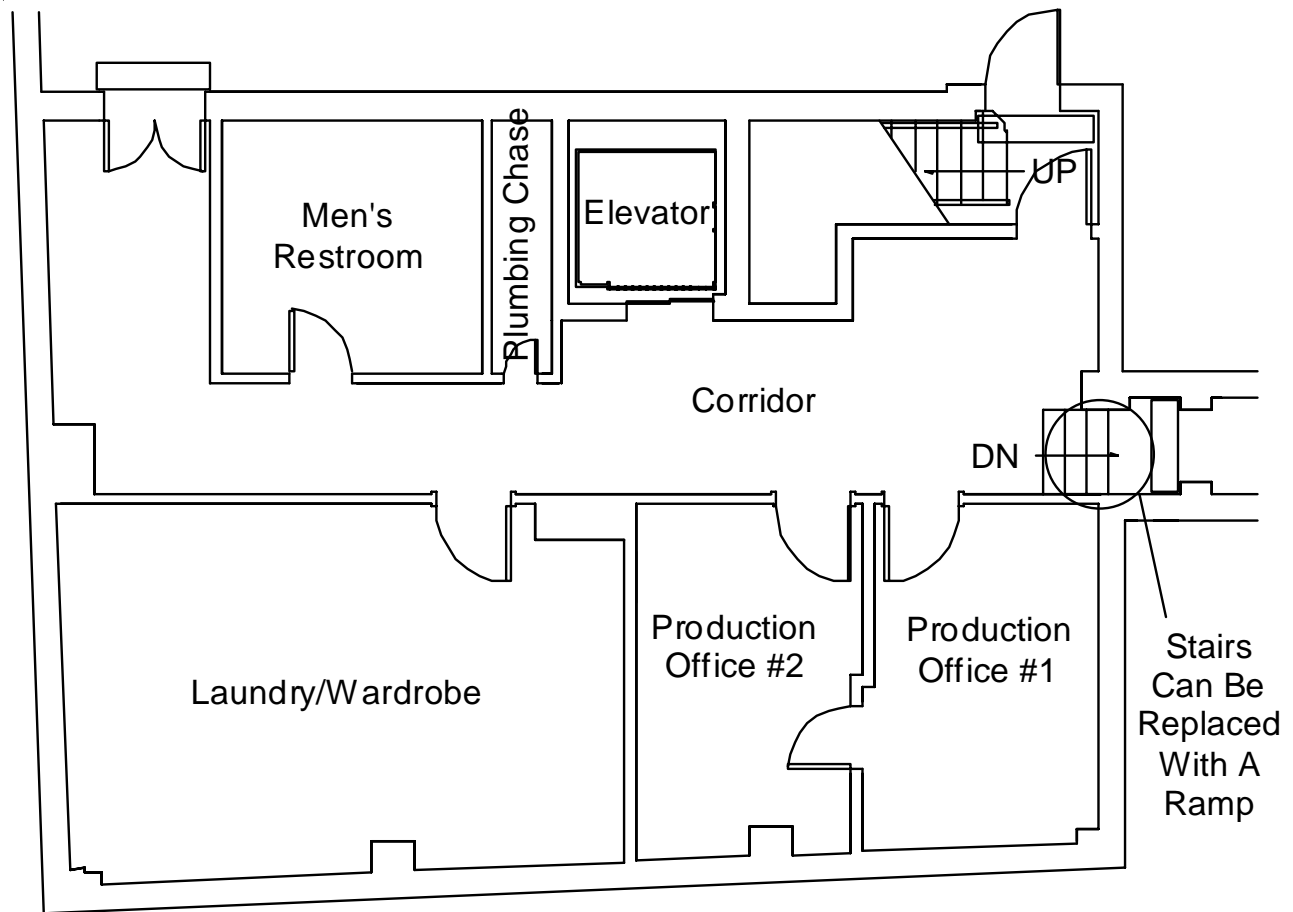




FULL BASEMENT PLAN



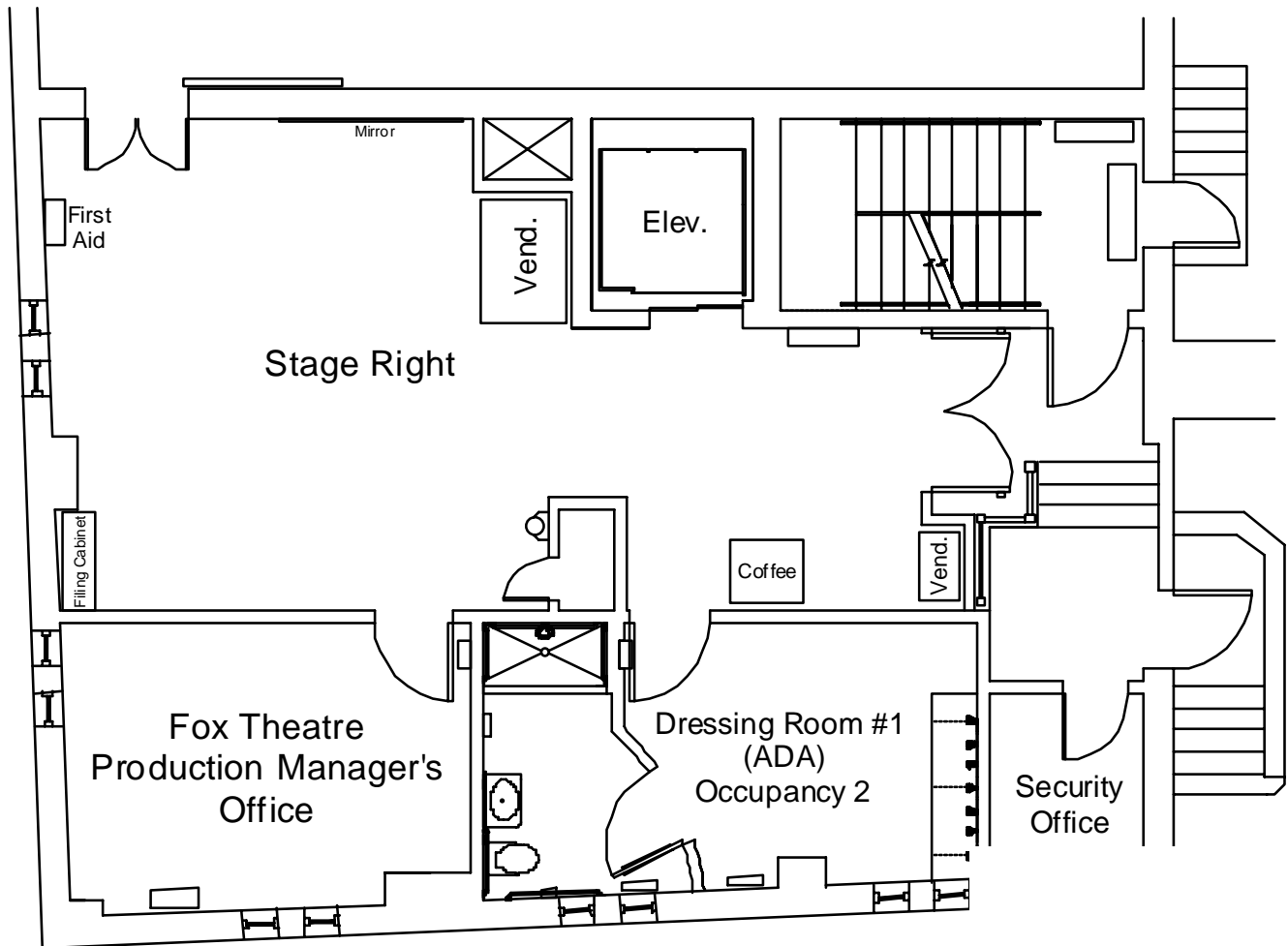
BASEMENT FLOOR PLAN



Basement Plan

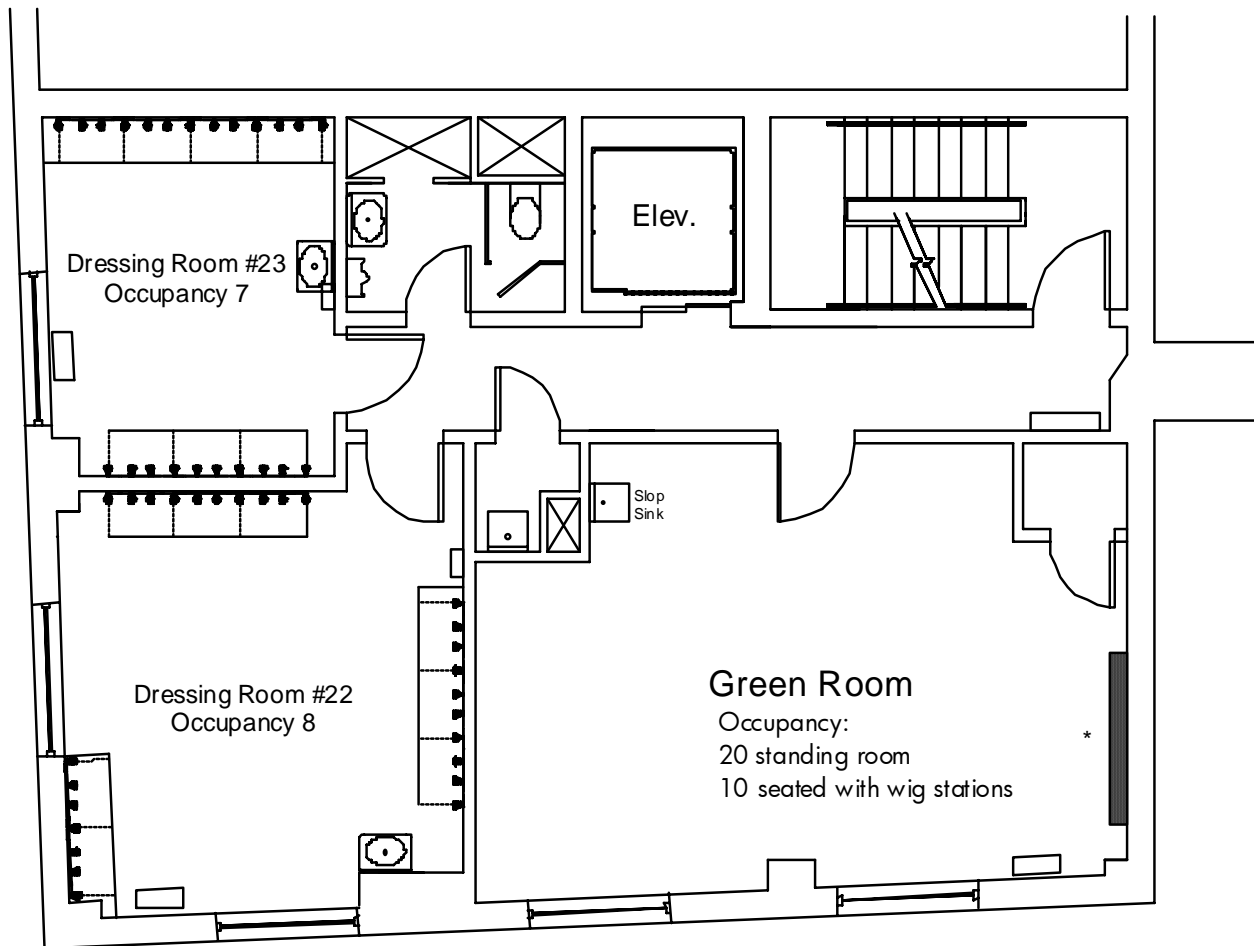


FIRST FLOOR/STAGE LEVEL PLAN



1st Floor Plan

SECOND FLOOR PLAN

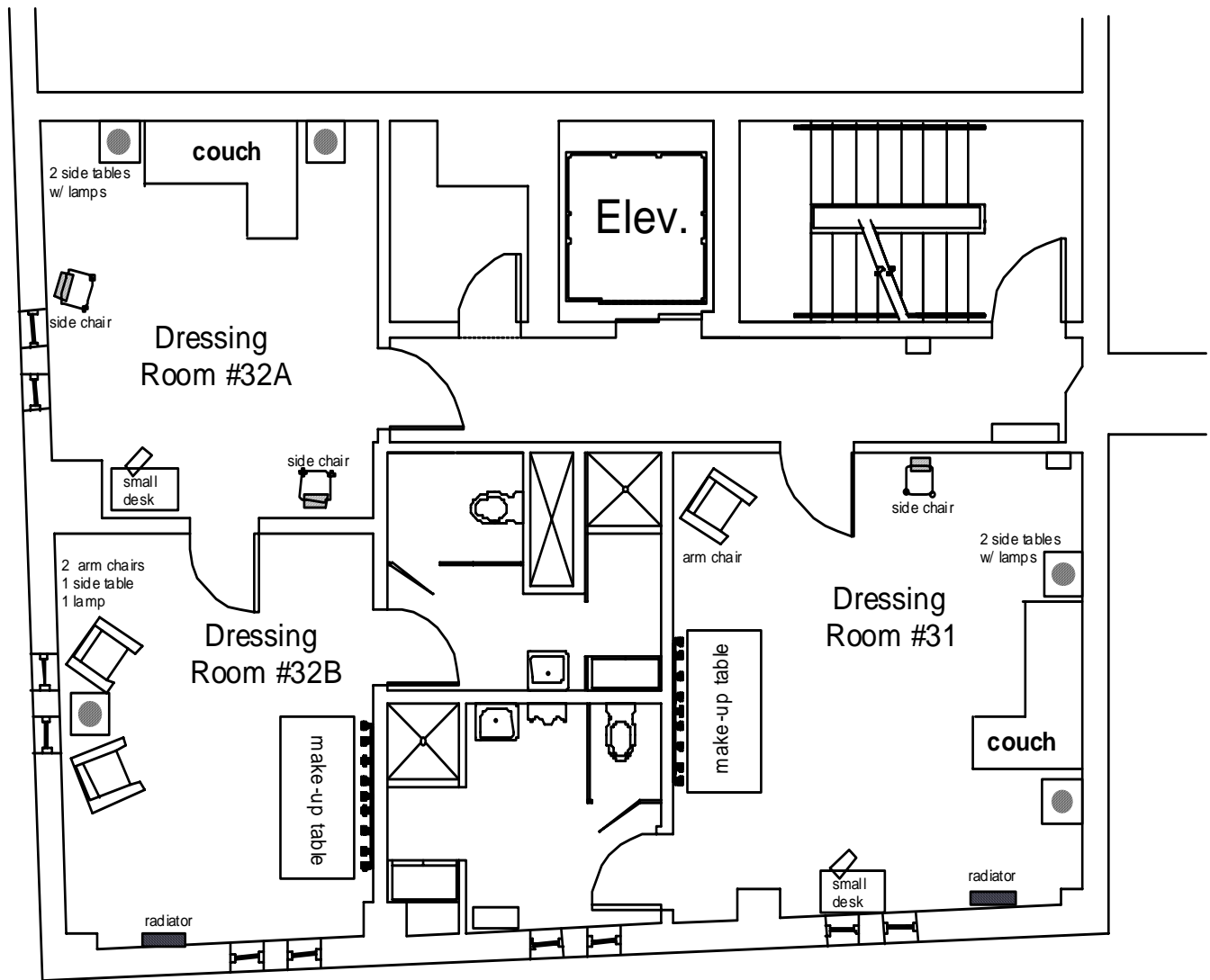


2nd Floor Plan

* The East wall of the 2nd Floor Green Room is equipped with nine (9) 60 amp circuits to accommodate wig dryers.



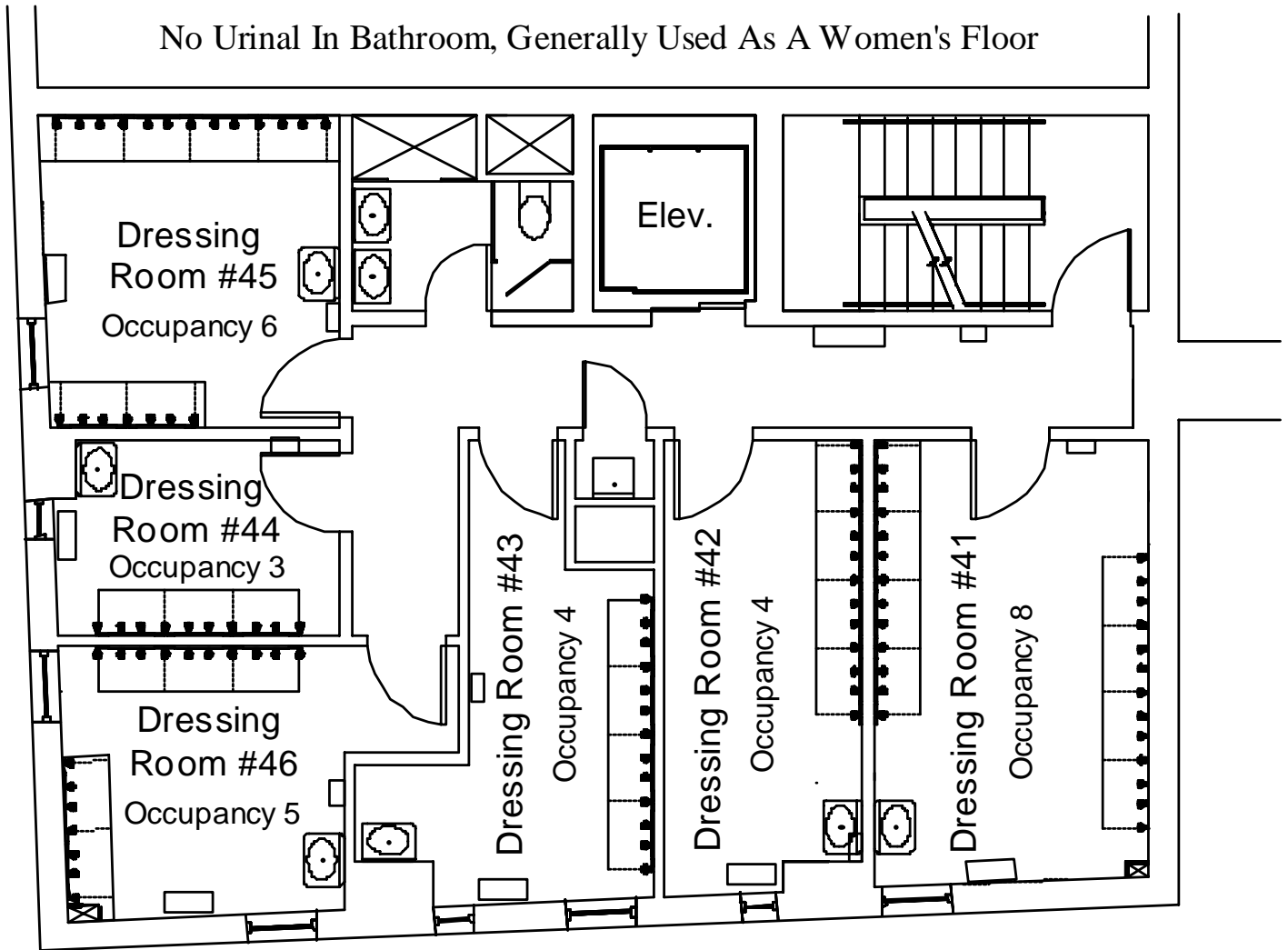
THIRD FLOOR PLAN



3rd Floor Plan



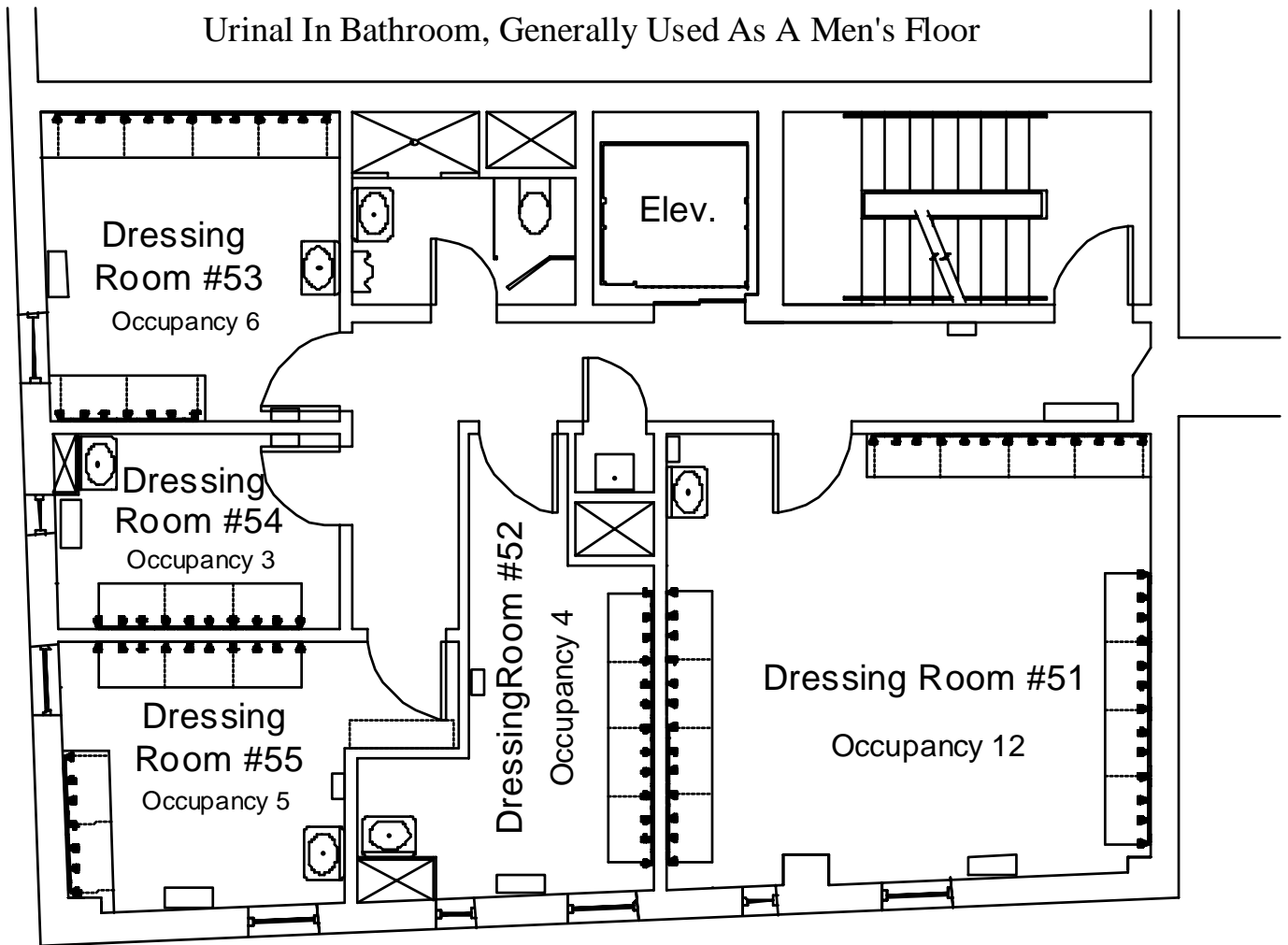
FOURTH FLOOR PLAN



4th Floor Plan



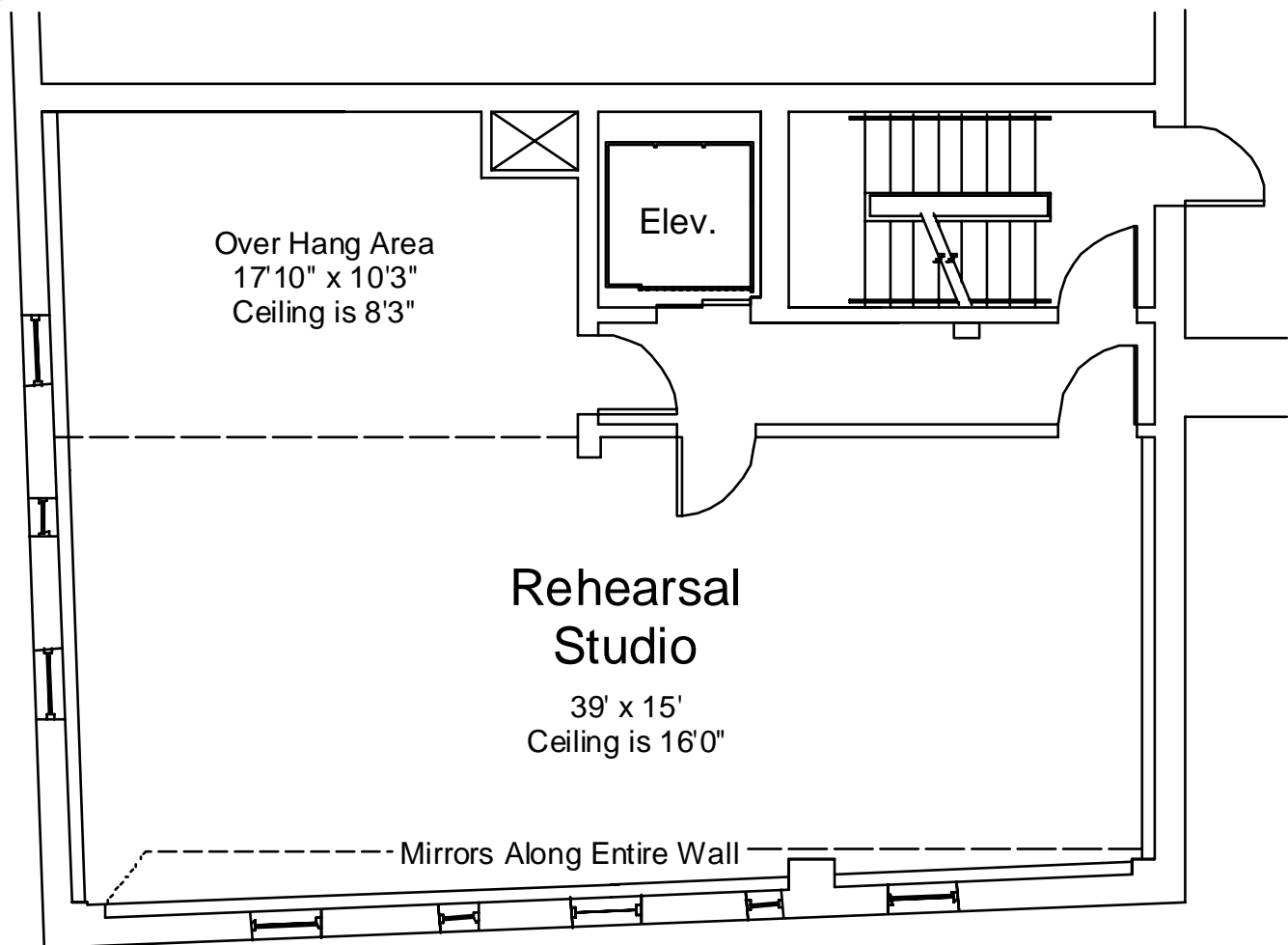
FIFTH FLOOR PLAN



5th Floor Plan

SIXTH FLOOR PLAN

There is an upright piano stored on this floor that is available to rent for rehearsal purposes.



6th Floor Plan