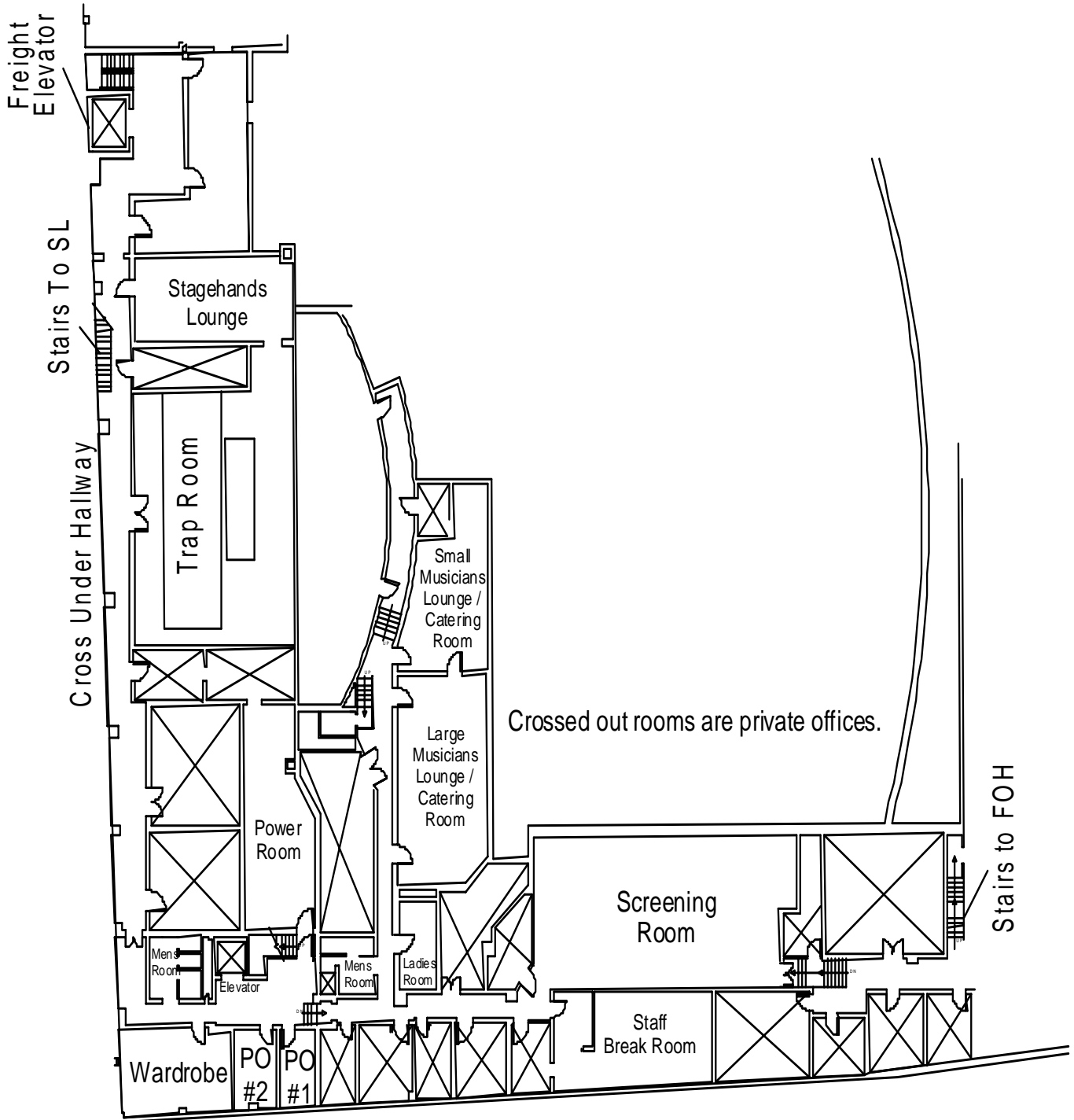
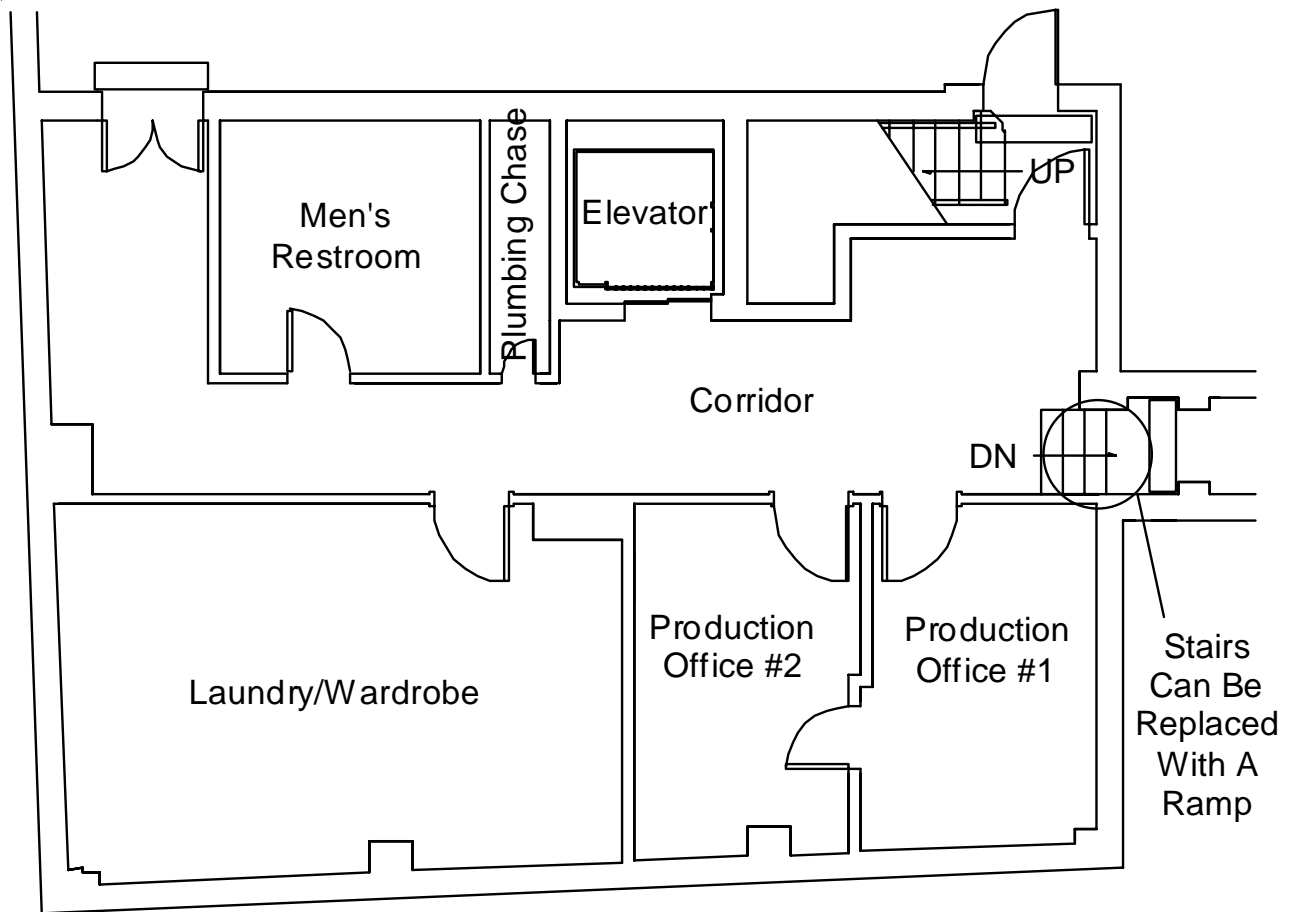




**FULL BASEMENT PLAN**



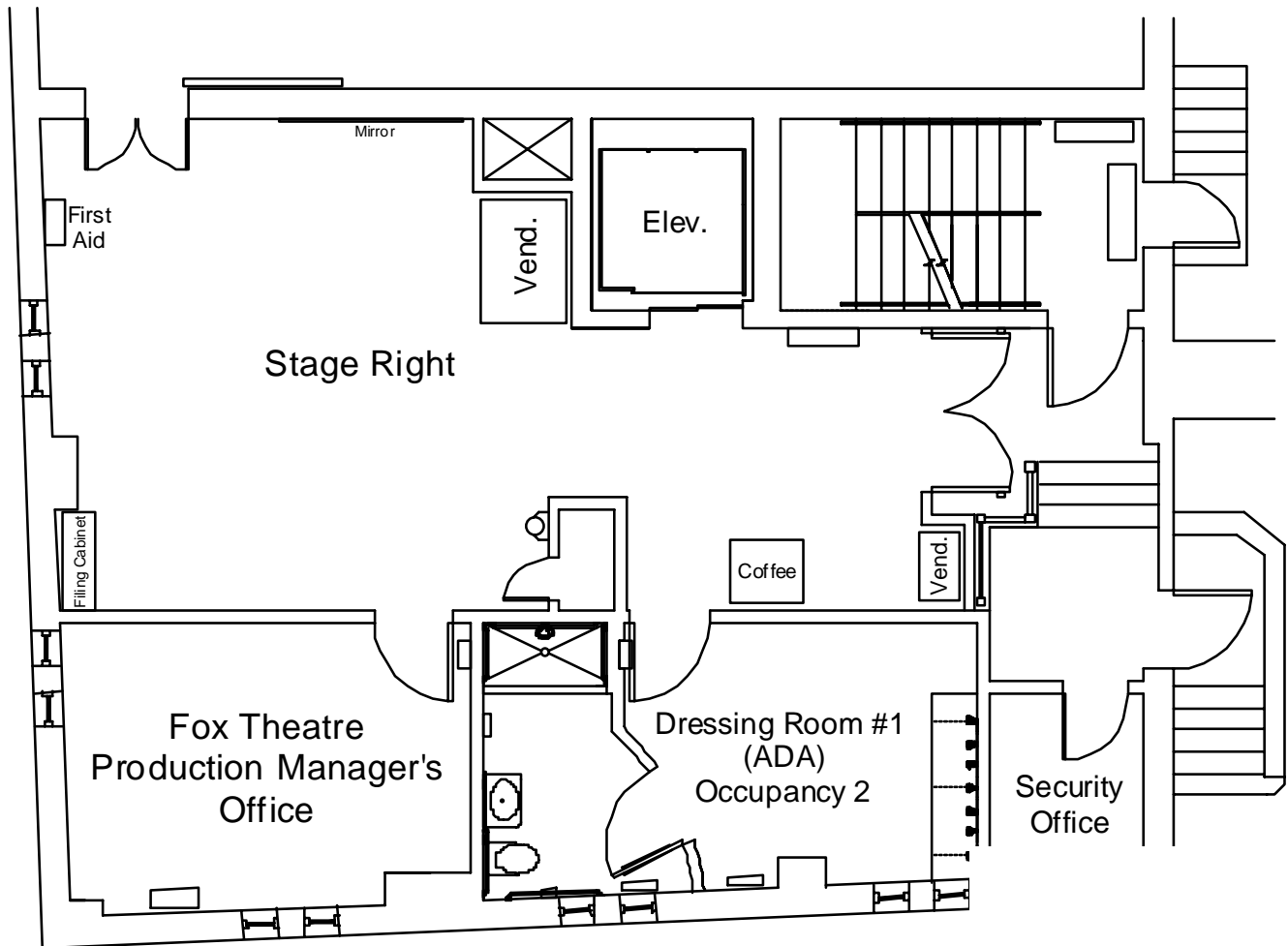
**BASEMENT FLOOR PLAN**



**Basement Plan**

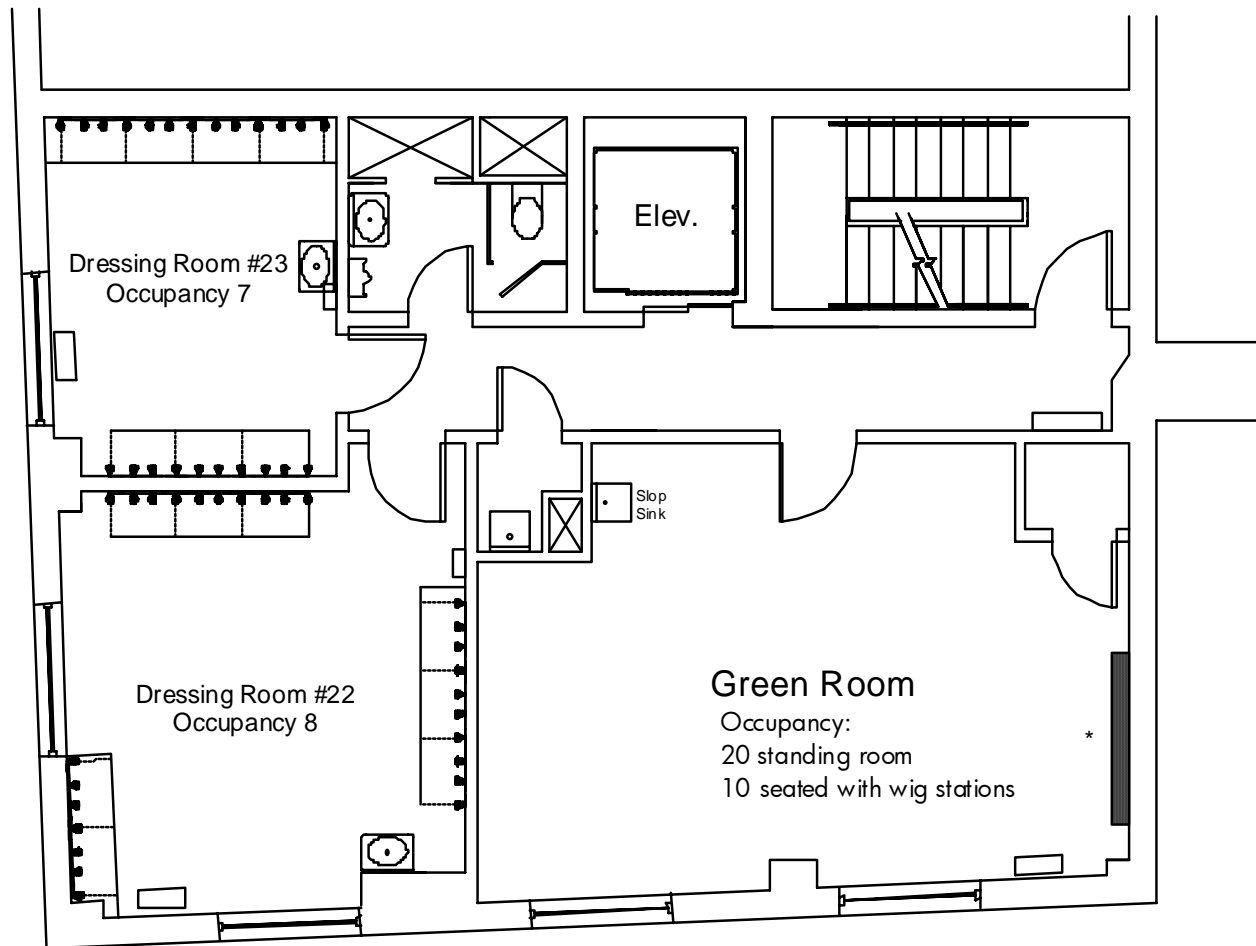


**FIRST FLOOR/STAGE LEVEL PLAN**



1st Floor Plan

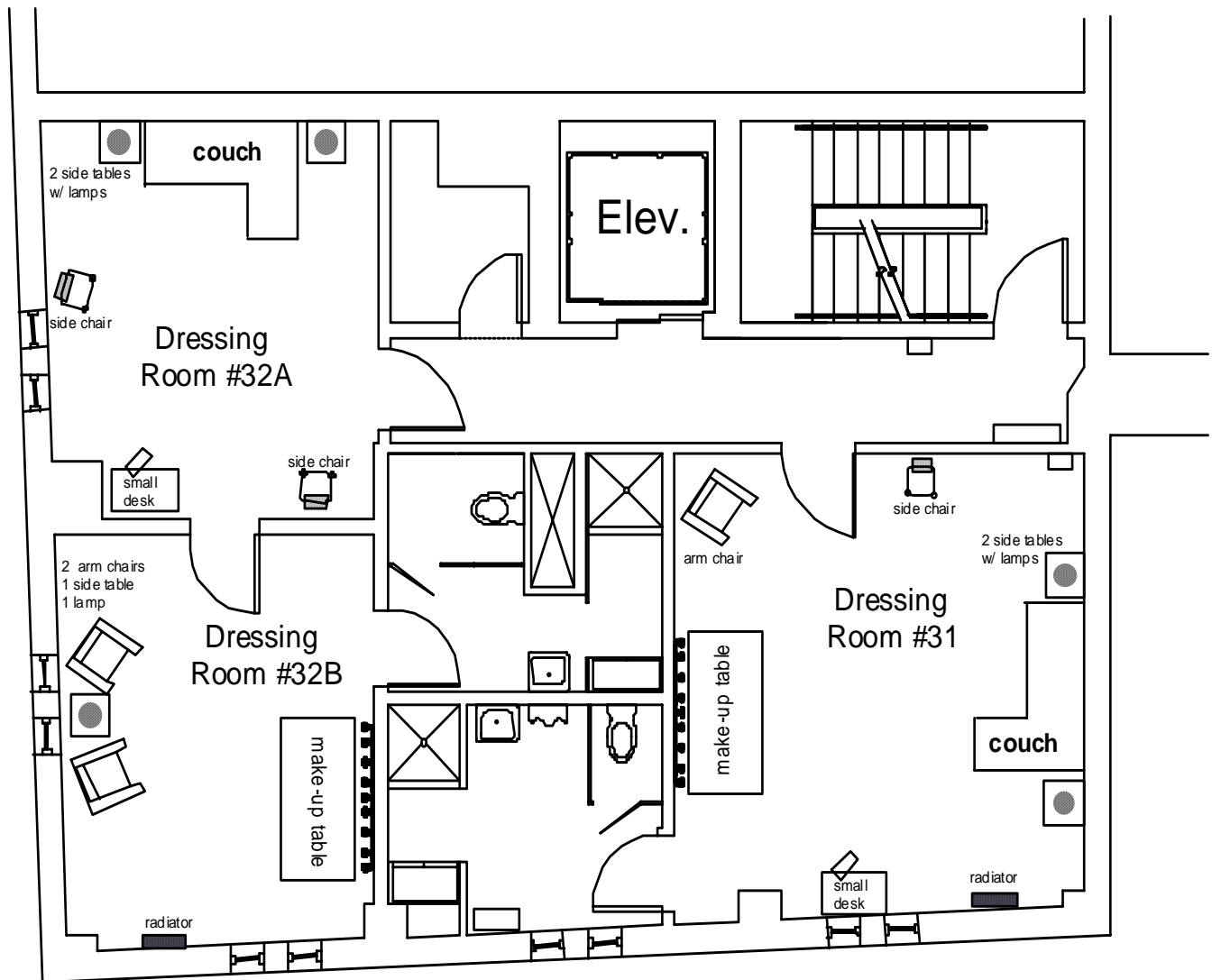
**SECOND FLOOR PLAN**



2nd Floor Plan

\* The East wall of the 2nd Floor Green Room is equipped with nine (9) 60 amp circuits to accommodate wig dryers.

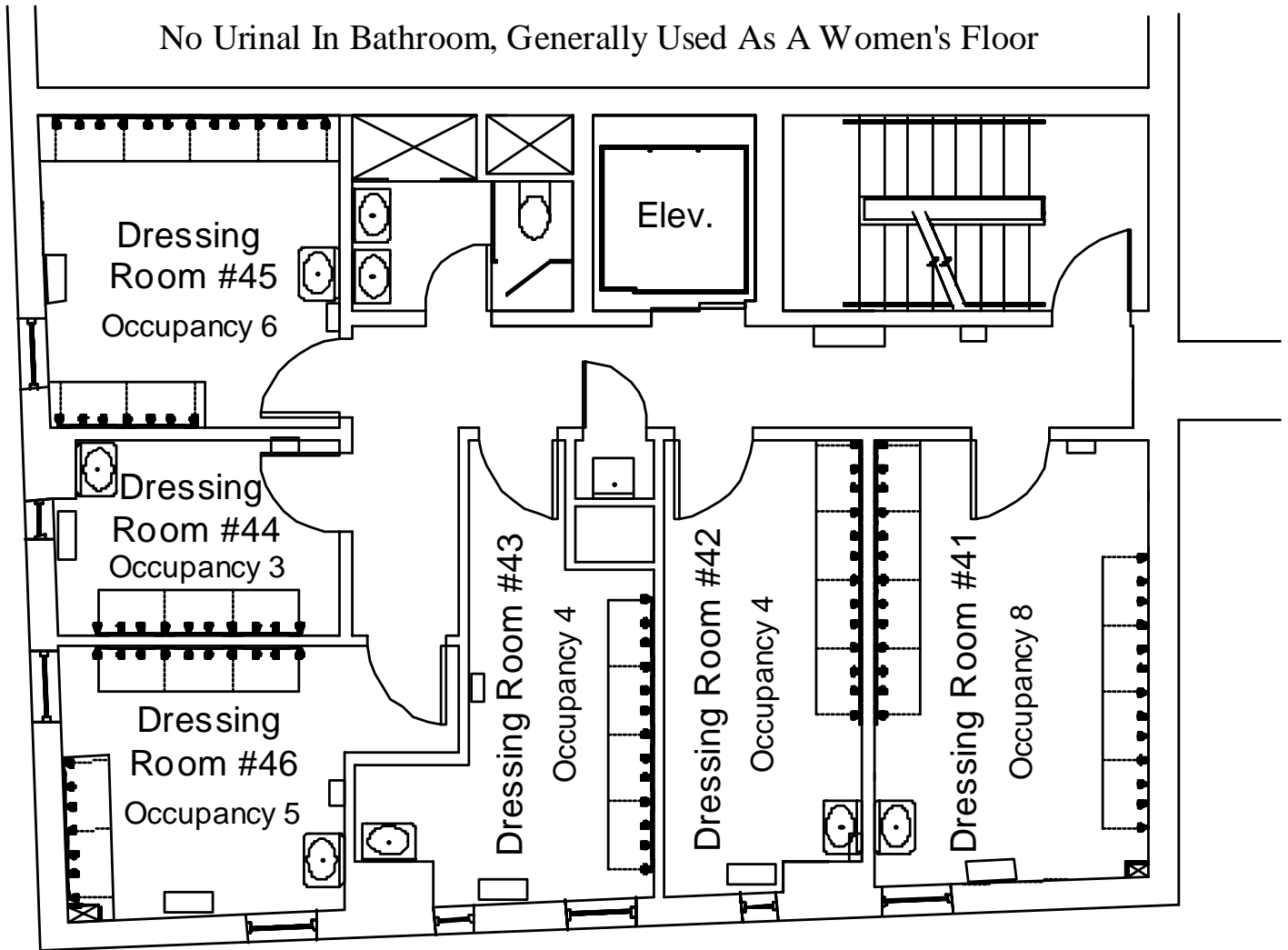
**THIRD FLOOR PLAN**



3rd Floor Plan



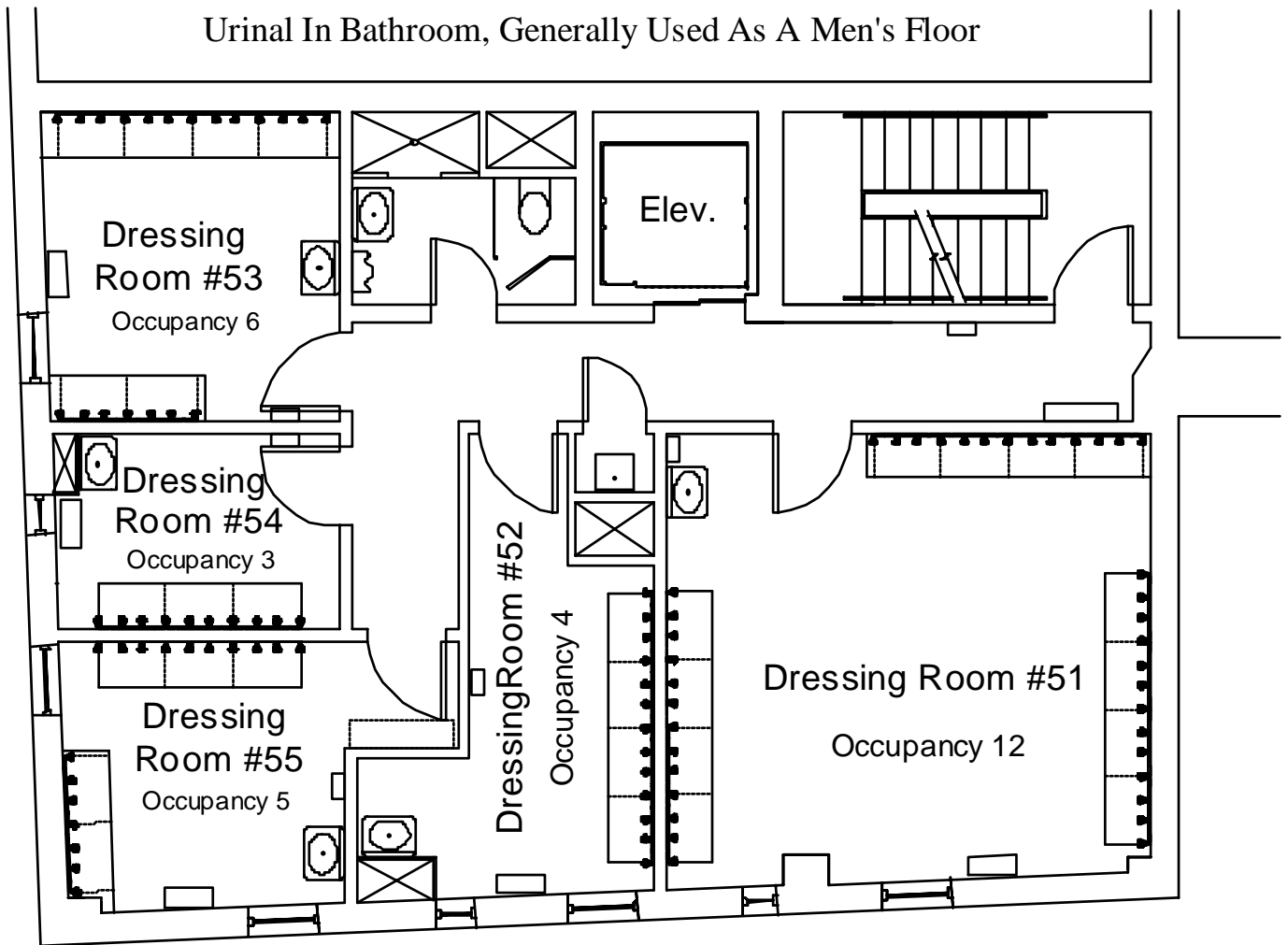
**FOURTH FLOOR PLAN**



4th Floor Plan



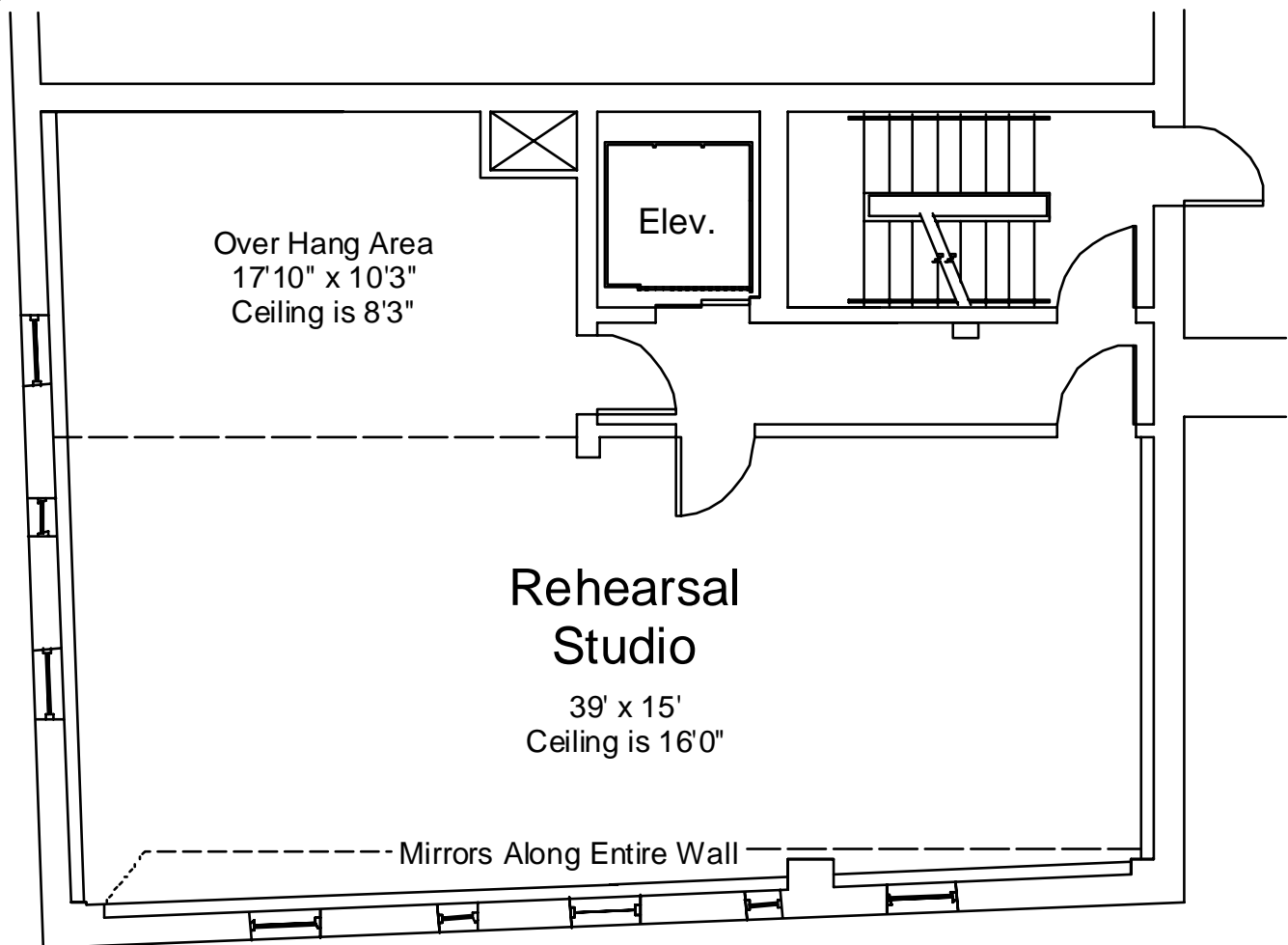
**FIFTH FLOOR PLAN**



5th Floor Plan

## SIXTH FLOOR PLAN

There is an upright piano stored on this floor that is available to rent for rehearsal purposes.



6th Floor Plan