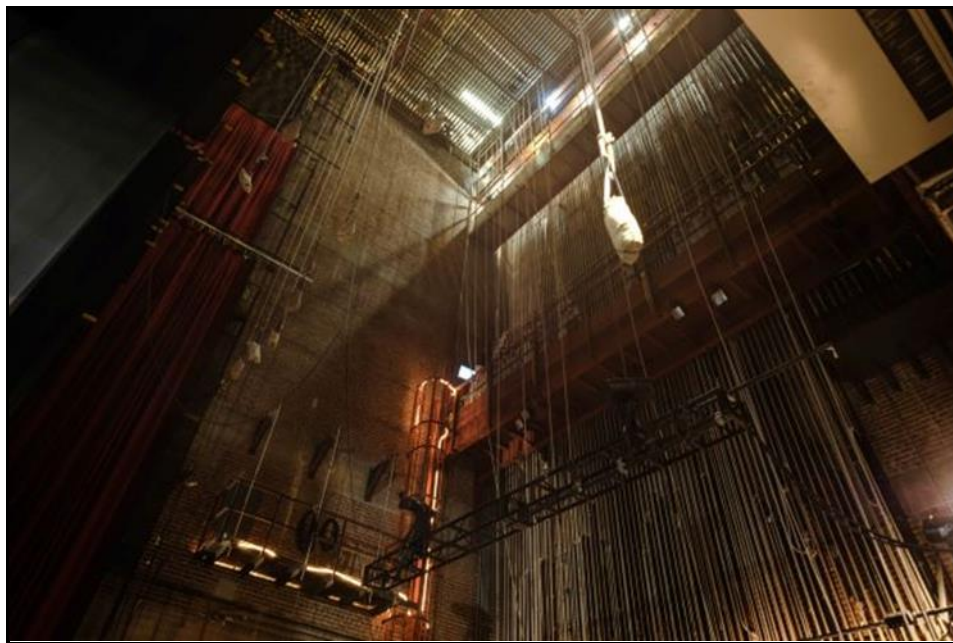


GRID & LOADING BRIDGE PHOTOS



GRID TOP VIEW



LOADING BRIDGE & MID BRIDGE

GRID: steel running down stage / upstage / 4" gaps. Sheaves sit on top of steel and can be kicked. See lineset schedule for obstructions. Head blocks on stage right. Offstage cable pick sheaves. Access hatches (2x) on stage left with 1ton motors above hatch. Fall arrest available at access hatch.