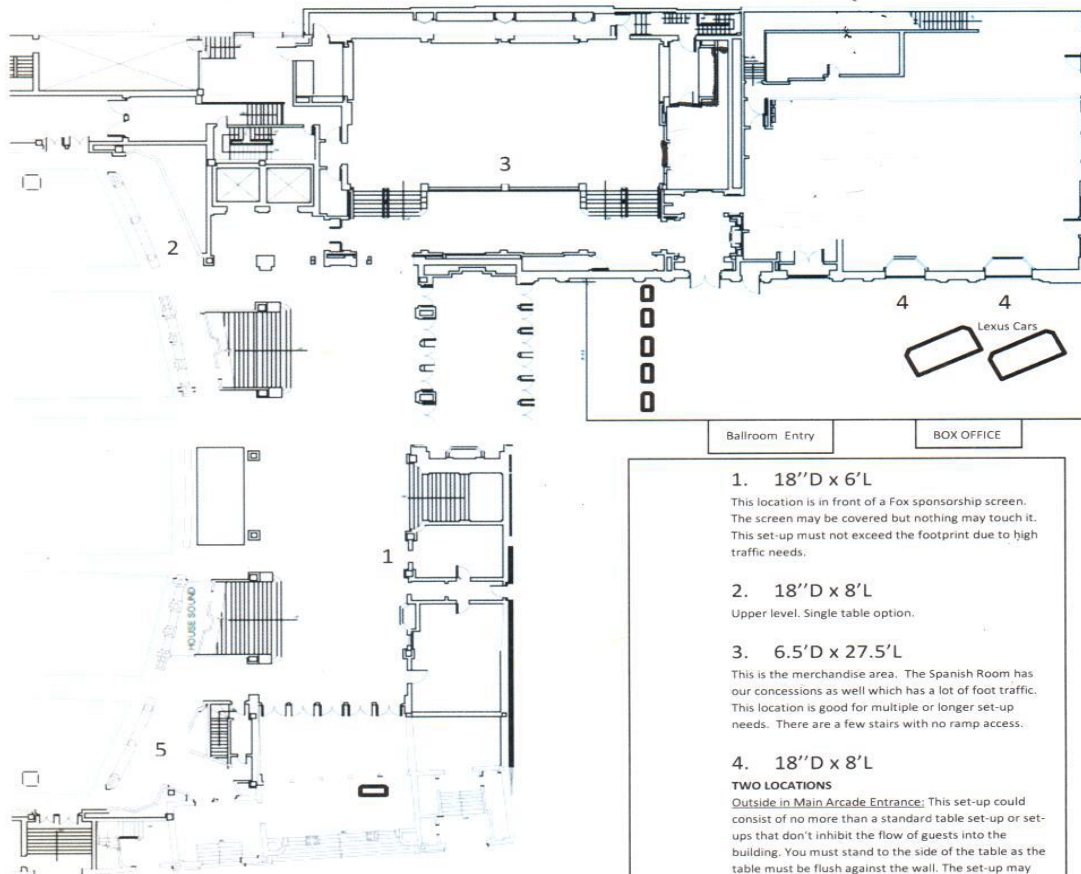


## LOBBY MAP



Ballroom Entry

BOX OFFICE

**1. 18''D x 6'L**

This location is in front of a Fox sponsorship screen. The screen may be covered but nothing may touch it. This set-up must not exceed the footprint due to high traffic needs.

**2. 18''D x 8'L**

Upper level. Single table option.

**3. 6.5'D x 27.5'L**

This is the merchandise area. The Spanish Room has our concessions as well which has a lot of foot traffic. This location is good for multiple or longer set-up needs. There are a few stairs with no ramp access.

**4. 18''D x 8'L**

**TWO LOCATIONS**

Outside in Main Arcade Entrance: This set-up could consist of no more than a standard table set-up or set-ups that don't inhibit the flow of guests into the building. You must stand to the side of the table as the table must be flush against the wall. The set-up may not block the Fox sponsorship windows. No wireless abilities.

**5. 8'D x 8'L**

Upper level. This is location is for merchandise.

**TO BE AWARE OF: Metal Detectors**

**TWO LOCATIONS**

Arcade: This is the main entrance into the lobby. The typical set-up is 5-7 mobile units.

Ponce Entrance: This is the side entrance into the lobby. The typical set-up is 1-2 mobile unit.

**\*\*\*ALL ARCADE & LOBBY LOCATIONS MUST BE APPROVED BY DIRECTOR OF EVENTS\*\*\***

Rachel Bomeli [rachel.bomeli@foxtheatre.org](mailto:rachel.bomeli@foxtheatre.org)

- Please note that we are a 1929 historic venue with limited room. Certain areas of the building may have restrictions for life safety precautions.
- No set-up opportunities are guaranteed and must be approved by Fox management. Set-ups that obstruct walk ways or crowd flow will have to be removed upon request of management.
- Securing to walls in any way is prohibited
- Power can be limited so please keep this in mind
- Load in and load out of lobby and arcade spaces is based on approval by Production and may incur additional staffing cost for door access and supervision.
- Tables can be provided by the Fox at no charge. Tables are a standard 6' with cloth and skirting.

**FRONT OF HOUSE LOBBY**

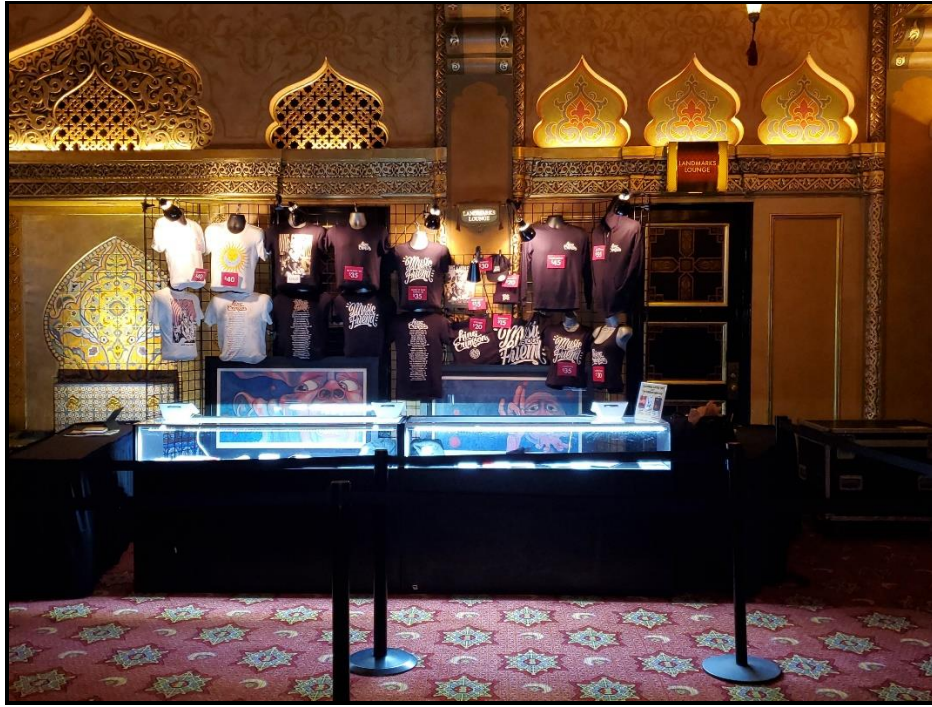


**MAIN LOBBY FACING TOWARD SPANISH ROOM**

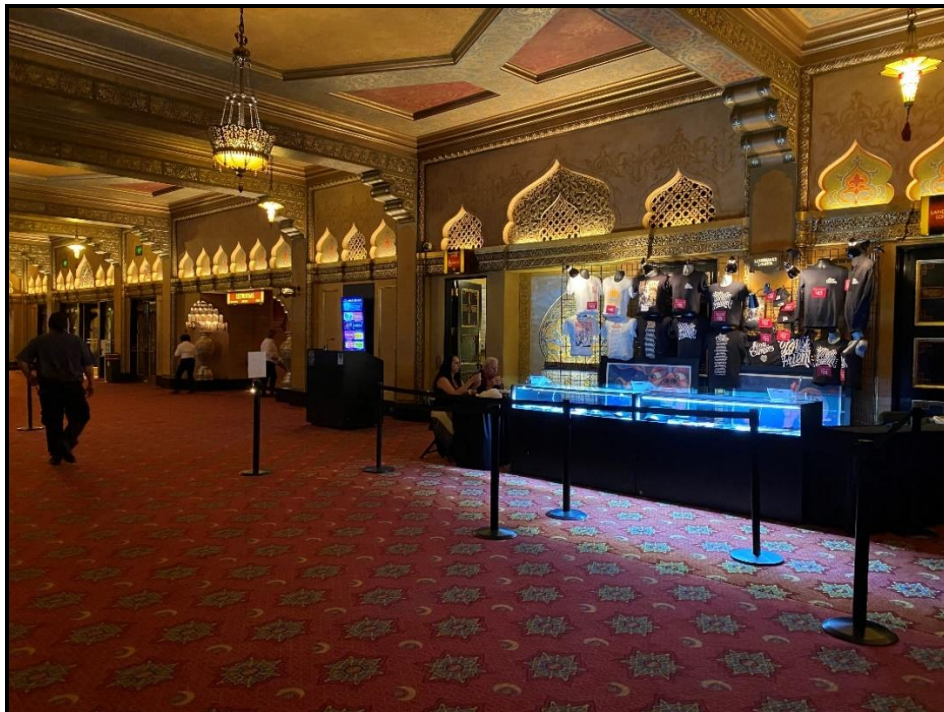


**MAIN LOBBY FACING SMOKING PORCH / PONCE DE LEON ENTERANCE**

**FRONT OF HOUSE LOBBY MERCHANDISE SPACE**



**MAIN LEVEL LOBBY MERCH SETUP SPACE**



**MAIN LEVEL LOBBY MERCH SETUP SPACE**

**FRONT OF HOUSE MEZZAINE LEVEL MERCHANDISE SPACE**



**MEZZAINE LEVEL 2<sup>nd</sup> FLOOR - MERCHANDISE SETUP LOCATION**



**MEZZAINE LEVEL 2<sup>nd</sup> FLOOR - MERCHANDISE SETUP LOCATION**