



GENERAL MEASUREMENTS AND INFORMATION

Please note:

The Main Curtain, Teaser House PA, and various other soft goods are hanging in the theatre at all times. Some items are there for the use by traveling productions. If soft goods and/or House PA need to be removed prior to a show's load-in, this will constitute a work call and will be charged as an additional cost to the promoter.

STAGE	MEASUREMENT
PROSCENIUM WIDTH / OPENING	79'11"
PROSCENIUM HEIGHT Deck to the bottom of Lambrequin frame	31'0"
Deck to the bottom of arch plaster	35'8"
FRONT EDGE OF STAGE TO US EDGE OF FIRE CURTAIN (0'0")	4'3"
DEPTH OF SMOKE POCKET	13"
FIRE CURTAIN (0'00") TO BACK WALL	34'7"
STAGE FLOOR TO BOTTOM OF PICTURE SHEET	35'9"
GRID HEIGHT (stage to the bottom of steel)	75'0"
AVERAGE BATTEN LENGTH (battens have bridals)	75'0" (line sets #1, #2, #3 are 95'0")
PIPE TRAVEL DISTANCE	66'4"
MAXIMUM ARBOR CAPACITY	900 lbs
TOTAL COUNTER WEIGHT AVAILABLE FOR SINGLE PURCHASE (LS#1-64)	19,000 lbs Each brick- 25 lbs
TOTAL COUNTER WEIGHT AVAILABLE FOR DOUBLE PURCHASE (LS#65-74)	18,000 lbs. Each brick - 17 lbs. 13' arbors capacity of 900 lbs. (+/-)
OUT TRIM OF THE CENTER CLUSTER	Stage to the bottom cluster- 37'6"

****House to Stage Access:** is limited by the house PA system in front of the stairs obstructing the pathway. However, stairs can be placed in the pit (depending on seating arrangements in the pit) after being advanced with production**



GENERAL MEASUREMENTS AND INFORMATION

HOUSE	MEASUREMENT
FRONT EDGE OF STAGE TO ROCK & ROLL MIX POSITION	77'10"
FRONT EDGE OF STAGE TO BROADWAY MIX POSITION	124'3"
FRONT EDGE OF STAGE TO REAR OF HOUSE MIX POSITION	136'
MIX POSITIONS: ROCK & ROLL (center of house) BROADWAY (Rows OO-RR #51-65) OASIS REAR OF HOUSE The Oasis position is best for lighting or camera position. This location is not for use by audio	Rock & Roll: 25' (w) x 9'6" (d) Broadway: 14' (w) x 8'5" (d) Oasis: 20' (w) x 12' (d)
FRONT OF STAGE @ CENTER TO BALCONY RAIL	59'0"
HEIGHT OF BALCONY RAIL FROM STAGE LEVEL	17'0"
FRONT OF STAGE @ CENTER TO BOX BOOMS	73'8"
HEIGHT OF BOX BOOM FROM STAGE (measurements from lowest to highest)	23'0" – 1 st Rung 25'3" – 2 nd Rung 27'6" – 3 rd Rung 29'9" – 4 th Rung
FRONT EDGE OF STAGE TO THE ORCHESTRA SEATS	First Row: 23'0" Last Row: 132'0"
SIDE SCREEN INFORMATION (The Fox does not own side screens.) Rigging Points R19 & R20 for House Left R11 & R12 for House Right	No wider than 14' Screen height 7.8' for 16:9 ratio Screen height 10.5' for 4:3 ratio Throw distance from balcony rail – 45.5'
PIT	MEASUREMENTS
DEPTH OF PIT AT HOUSE LEVEL TO STAGE	3'5"
LOWEST DEPTH OF PIT FROM STAGE	11'3"
INTERNAL WIDTH OF PIT	65'9"
INTERNAL DISTANCE OF PIT FROM CENTER LINE TO THE ARCH OF THE PIT WALL	19'9"

MIX POSITIONS – ROCK N ROLL

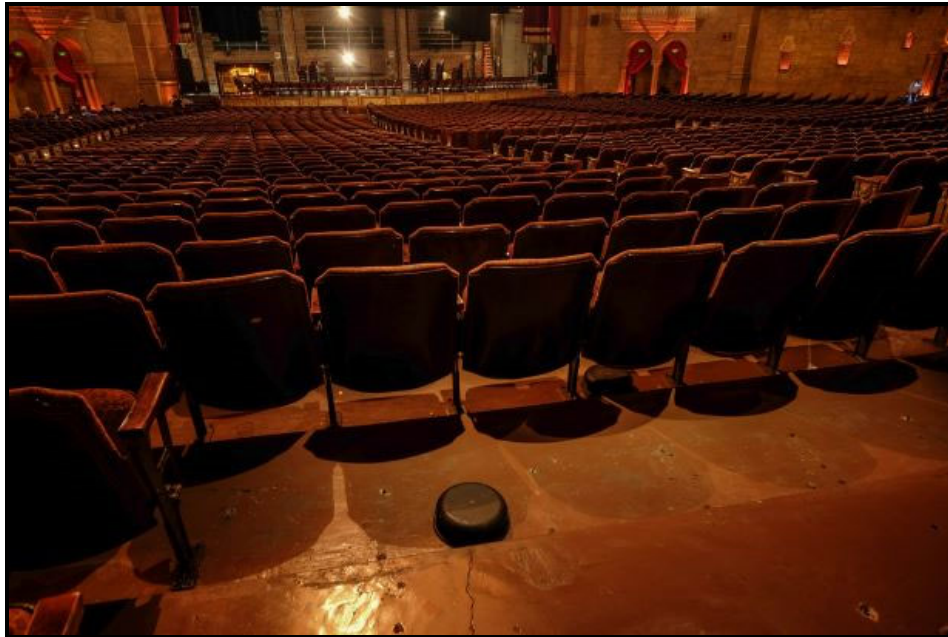


ROCK AND ROLL MIX POSITION – MIXING SHOW

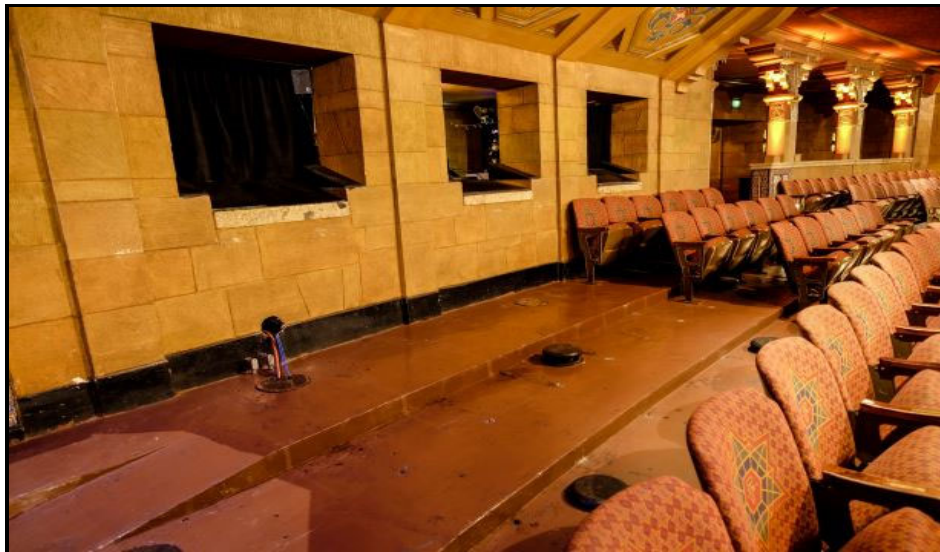


EMPTY ROCK AND ROLL MIX POSITION

MIX POSITIONS – BROADWAY MIX



BROADWAY MIX POSITION VIEW TO STAGE



BROADWAY MIX POSITION & FOX SOUND BUNKER

OASIS POSITION – CAMERAS / VIDEO / LIGHTING



OASIS MIX POSITION VIEW FROM MIX TO STAGE



OASIS MIX POSITION LIGHTING / VIDEO / CAMERA