



**LIGHTING INVENTORY**

QUANTITY	DESCRIPTION
<b>243</b>	<b>ETC Source Four Bodies</b> (165 lamped at 750 watt / 48 lamped at 575 watt)
27	10 degree lens
63	19 degree lens
7	19 degree Hi-Definition lens
87	26 degree lens
51	36 degree lens
6 + 2HD	50 degree lens
93	Source Four PAR's (VNSP, NSO, MFL, WFL) (Lamped at 750 watt)
8	Source Four PAR's (VNSP, NSO, MFL, WFL) (Lamped at 575 watt)
<b>Par Lens</b>	<b>Par Lens Only</b>
48	Wide Lens
67	Medium Lens
74	Narrow Lens
119	Very Narrow Lens
<b>Cyclorama Fixtures</b>	
24	3-cell (650 watts per cell) units. Selecon "Hui" Units can be configured for overhead or ground row use. (12 overhead, 12 ground row)
<b>Spot Lights</b>	
4	Lycian 4K (model 1295 XLT) Throw to stage: 157' These can be lamped to 3K lamps with <b>2 months' notice</b>
<b>Light Board</b>	
1	ETC ION Console v.1.9 with RPU
1	Remote video interface with 2 DVI flat screen monitors
<b>Stage Booms</b>	
8'	12' Threaded Pipe for Stage Booms
12	Bases for Stage Booms



**LIGHTING INVENTORY**

<b>POWER</b>		
<b>LOCATION</b>	<b>QUANTITY</b>	<b>DESCRIPTION</b>
Down Stage Right	2	400-amp, 3 Phase, requires cam locks
Stage Left Prop Room	1	400-amp, 3 phase, requires tails
Upstage Right	1	30-amp, 3 phase, requires tails (8-10 AWG)
Upstage Right	1	60-amp, 3 phase, requires tails (8-10 AWG)
Down Stage Left <b>And/Or*</b> SR Power Rm	1	TIE INS: 200-amp, 3 phase, requires tails *Isolated Ground for Audio *200amps total in parallel*
Balcony Rail & Box Boom	0	208 is not available in this area 1 *if needed it is a 200' run from down stage right or left*
Spot Booth	8	60-amp spotlight disconnects 4 in use when house spots used
Shore Power	4	Max 200 amp available, 3 phase (2 tails) **Show needs to provide jumpers & 50-100 feet of feeder required depending on placement of bus**
Shore Power Pig Tails	2	14-50-amp tails **Show needs to provide jumpers at least 50ft. of feeder depending on where they are parked**
Catering Tie In	1	100-amp 3 phase or 208 single phase Cables not provided by house will need at least 100' of bare end/tails cable for tie in
<b>Cables &amp; Misc</b>	<b>QUANTITY</b>	<b>DESCRIPTION</b>
Stage Pin	9	75' Cable
	2	50' Cable
	12	25' Cable
	2	15' Cable
	61	10' Cable
	27	5' Cable
	1	140' Cable
Two-Fers	60	
Adapters	3	M Stage Pin to Female Edison



**LIGHT INVENTORY**

QUANTITY	DESCRIPTION
----------	-------------

<b>Multi - Cable</b>	
12	100' Multi-Cable
6	75' Multi-Cable
4	50' Multi- Cable
4	25' Multi – Cable
5	As needed, Multi- Cable in Sky to accommodate show installed FOH truss
<b>Breakouts</b>	
56	3 Breakins / 6 Circuit breakouts

<b>DMX</b>	
LOCATION	DESCRIPTION
Balcony Rail Stage Right	2 Female Lines / Originating from DSR
R&R Mix Position	3 Male Lines / 1 Female Line / Originating from DSR
Rear of House Lighting Area	3 Male Lines / 1 Female Line / Originating from DSR
Sky Truss	2 Cables / Originating from DSR

<b>ETHERNET</b>		
LOCATION	QUANTITY	DESCRIPTION
Rear of House Mix	2	Dry Lines Terminate at the “Hub” board DSR
Rock & Roll Mix	2	Dry Lines Terminate at the “Hub” board DSR

## POWER STAGE RIGHT

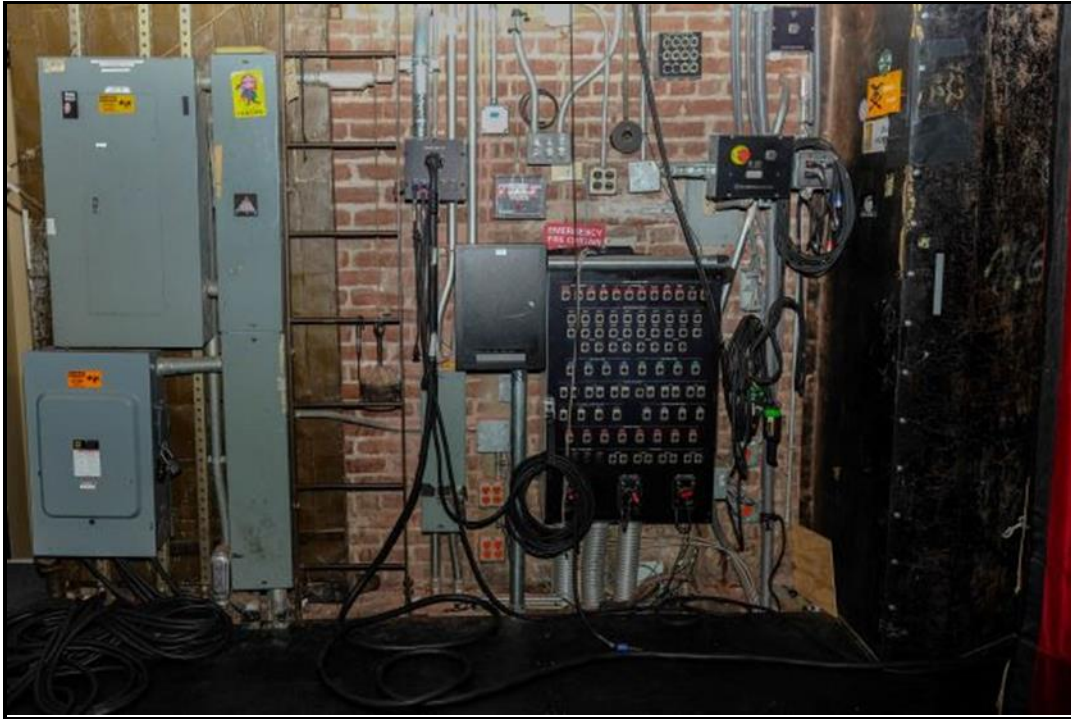


**CAM LOCKS DOWN STAGE RIGHT (DSR)**



**POWER DISCONNECT UP STAGE RIGHT (USR)**

**POWER STAGE LEFT**



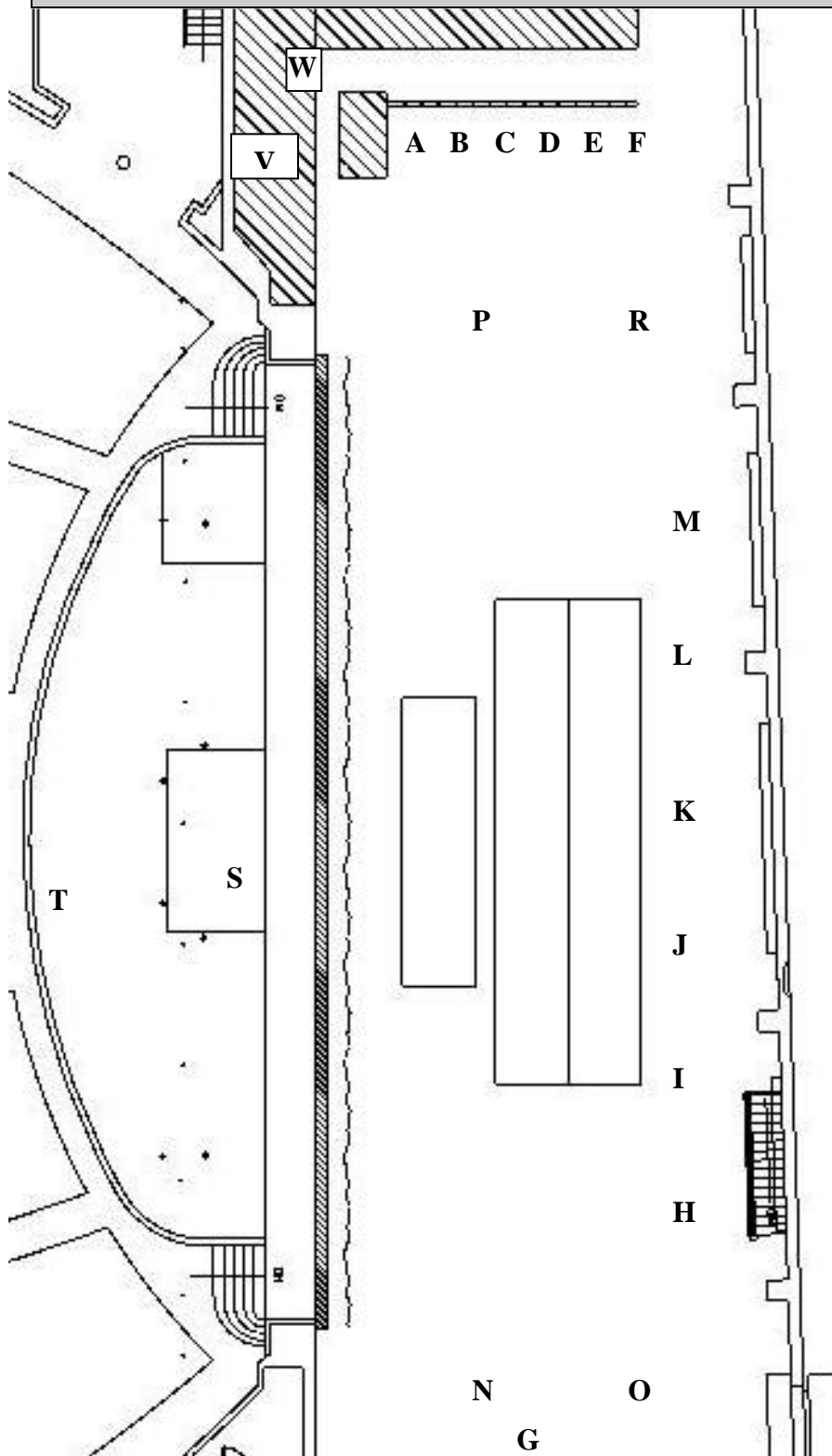
**POWER DOWN STAGE LEFT (DSL)**



**POWER STAGE LEFT PROP ROOM**



**DIMMER CIRCUITS**



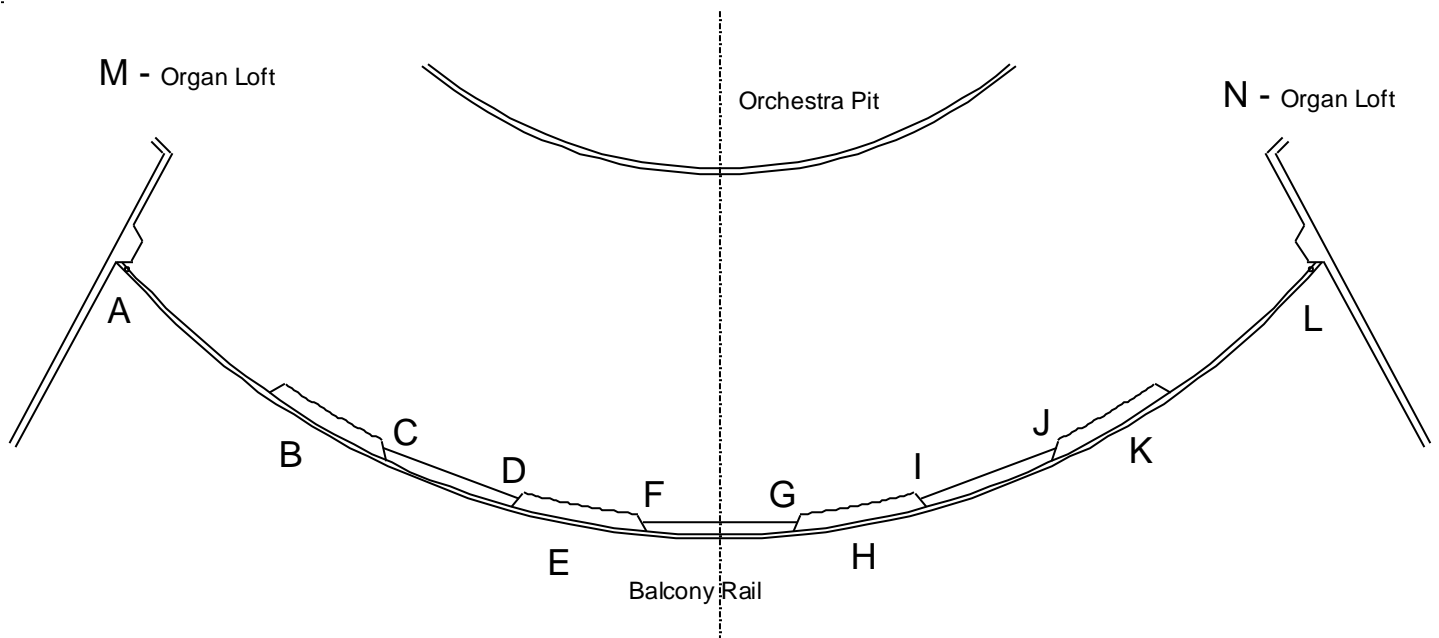
**KEY**

- A** - Dimmers 1 – 36  
Floor Box – 6 Socopex (6 circuits ea)
- B** - Dimmers 37 – 72  
Floor Box – 6 Socopex (6 circuits ea)
- C** - Dimmers 73 – 108  
Floor Box – 6 Socopex (6 circuits ea)
- D** - Dimmers 109 – 144  
Floor Box – 6 Socopex (6 circuits ea)
- E** - Dimmers 145 – 180  
Floor Box – 6 Socopex (6 circuits ea)
- F** - Dimmer 288  
2 Stagepin receptacles – Dimmer 288  
4 Edison receptacles – Non-Dims  
(each is separate 20a circuit)
- G** - Dimmers 181 – 216  
Wall Box – 6 Socopex (6 circuits ea)
- H** - Dimmers 217 – 219 (Cyc Floor Box)
- I** - Dimmers 220 – 222 (Cyc Floor Box)
- J** - Dimmers 223 – 225 (Cyc Floor Box)
- K** - Dimmers 226 – 228 (Cyc Floor Box)
- L** - Dimmers 229 – 231 (Cyc Floor Box)
- M** - Dimmers 232 – 234 (Cyc Floor Box)
- N** - Dimmers 235 + 236 (DSL Floor Box)
- O** - Dimmers 237 + 238 (USL Floor Box)
- P** - Dimmers 239 + 240 (DSR Floor Box)
- R** - Dimmers 241 + 242 (USR Floor Box)
- S** - Dimmer 243 (Act Lift Floor Box)
- T** - Dimmers 244 + 245 (Orch. Pit Floor Box)
- V** - Dimmers 246 – 287  
FOH Transfer Patch Bay  
All connections done with Stage Pin
- W** - Dimmers 289-336



**FRONT OF HOUSE DIMMER CIRCUITS**

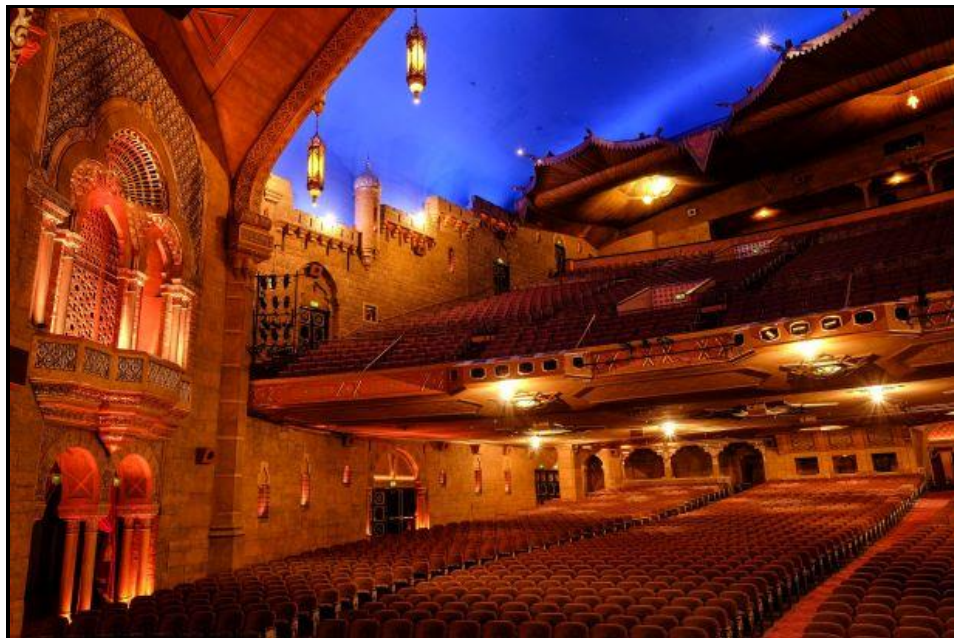
Location of FOH Circuits	Number of Circuits	Transfer Patch Numbers
A	18	1 – 18
B	1	19-22
C	6	23-28
D	6	29-34
E	1	35-38
F	6	39-44
G	6	45-50
H	1	51-54
I	6	55-60
J	6	61-66
K	1	67-70
L	18	71-88
M	6	89-94
N	6	95-100



**FRONT OF HOUSE BALCONY RAIL VIEWS**



**HOUSE VIEW BALCONY RAIL (3 Total positions)**



**HOUSE RIGHT BOX BOOMS –duplicated house left**